

ISSUE 17 | FEB 15 - MARCH 15, 2012
UAE - QATAR - LEBANON - SAUDI ARABIA



www.posemagazine.com

17

BETWEEN
THE LINES

FISH *Diet*
ANDREEA ZOIA

Fallen
ANGEL

EYES
WIDE *Shot*

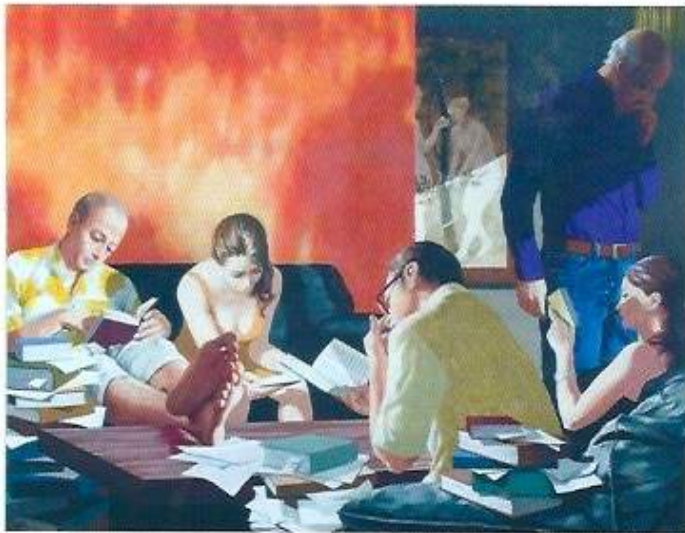
SAMI
KOUJAN

AED 15-LBP 6500-QAR 15-BHD 1.5



ANCIENT ROMANCE

© 2012 POSE MAGAZINE. ALL RIGHTS RESERVED. PRINTED IN THE UAE.
DISTRIBUTED BY: MIDDLE EAST PUBLISHING CO. LLC, 2012
www.posemagazine.com | www.thepose.com



Sony Tablet

The Sony Tablet S is a new addition to the Sony Tablet family. It features a 10.1-inch IPS LCD display, a quad-core processor, and 16GB of internal storage. The tablet is designed for both work and play, with a sleek and modern design. It is available in two colors: silver and black.

MEHRDAD MOHEBALI: *Mr Passive*

POSE CANVAS





Contemporary Iranian artist Mehrdad Mohebali's figurative paintings tell stories about human interaction and the mundane nature of daily life, which he captures in a timeless manner, similar to Dutch master paintings. Mohebali depicts scenes that at first glance seem familiar, but on closer examination, the characters are poised in a mysterious manner with facial expressions and body language deep in thoughts unknown to the viewer. We are confronted with characters in somewhat unfamiliar circumstances, engrossed in awkward scenarios or situations that are a juxtaposition of real and imagined circumstances. There is a sense of being 'caught in the act' or being interrupted. The viewer is a witness, in this peep-show, through Iranian history or a scene of normality.

The intricate use of signs and symbols in his paintings show the depth of his knowledge in Iranian history, and the psychology of its people. Mohebali creates a new vocabulary through brush strokes that produce realist images. By putting himself as a figure in his works, Mohebali always plays a character, questioning the role of artist as storyteller and observer simultaneously.

Mehrdad Mohebali
Mr Passive
Gallery Etemad
16 January - 18 February 2012

